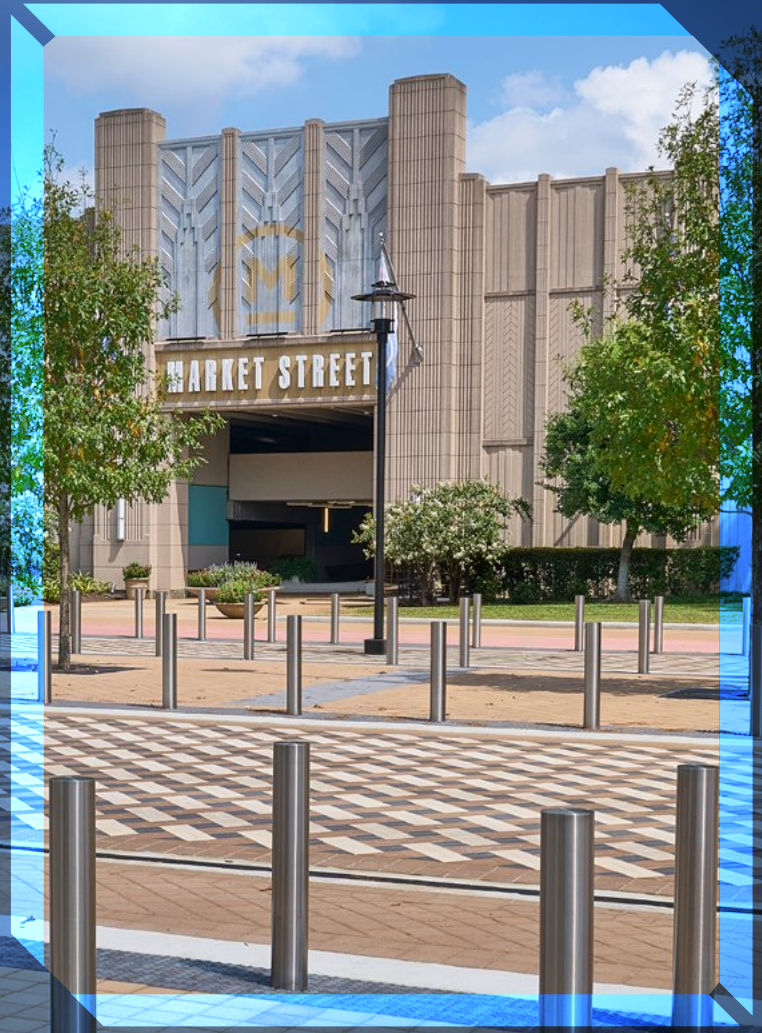




CONCRETE  
**MASONRY &  
HARDSCAPES**  
ASSOCIATION

---

**2025** ANNUAL  
REPORT



# TABLE OF CONTENTS

---

Welcome Messages	3
About CMHA	5
Board of Directors	6
Membership	7
New in 2025	9
Safety Awards	11
Advocacy and Initiatives	12
Innovation and Research	16
Education and Workforce Development	18
Events and Engagement	22
Foundation Updates	25
Financials	30
Looking Ahead to 2026	32
Member Listing	33



# LETTER FROM THE CHAIR



CONCRETE  
MASONRY &  
HARDSCAPES  
ASSOCIATION



**DAVID PITRE**  
CHAIR OF THE BOARD

This past year reminded me why CMHA matters and why the people in this industry are so exceptional. Several years into the full unification of the Interlocking

Z β ∅ β  
Z ~ Z ~

Z » ~ Z » ~  
Z ~

β p p β »  
R Z » ~

member value.

» ~ » ~

Z Z» Z » ~

Z Z R Z » ~

Z Z » ~ Z

R Z » ~

β p § Z p Z §

~ Z » ~ R Z ∅ β  
£ Z ~ £

Z » ~

e

LETTER

# FROM THE PRESIDENT



CONCRETE  
MASONRY &  
HARDSCAPES  
ASSOCIATION



**BOB THOMAS**  
PRESIDENT & CEO

Concrete Masonry &

If there's one theme that defines CMHA at its best, it's unity.

β Z »

β

Z »

Z β

Z

Z

β

e

R

Z »

Z »

Ø βE

Z ~ E

Z »

β

R



2025 CMHA

# BOARD OF DIRECTORS

## OFFICERS AND EXECUTIVE COMMITTEE

DAVID PITRE, CHAIR

»

§

STARLING JOHNSON, PZ p Z » ~ B

Z

TREVOR FEARN, pZ p ~ p ~ p

Z

B

SAM HOEHNER, ~ Z » ~ B

R

HEIDI JANDRIS, ~ Z » ~ B

R

WAYNE VILLALUNA, » ~ e Z ~ p Z » ~ B

R

Z

## DIRECTORS

FRED ADAMS, JR.

£

Z

B

ALWIN BENNMANN

R»

R

§

§

»

Z

§

STEVE BERRY

~

§

STEVE BURGOYNE

B

R

JASON DEAN

§

Z

JOSE DIAZ

MASA

CRAIG FINCH

Z

R

R

B

JOHN FIZZANO

£

R

CHARLES GAMAREKIAN

Z

B

FRANK GANDORA

Z

»

Z

KATHY GRANGER

TERRI GRULKE

R

Z

MANFRED HEROLD

R

Z

MELISSA KLINE

Z

Z

ucts

KYLE LIDINSKY

Z

p

TIM MCGINNIS

MIKE MUELLER

p

~

B

ROBERTO NICOLIA

TROY OBLINGER

Z

JOSEPH SANTAROSSA, JR.

Santerra Stonecraft

MARK SETTERSTROM

ZZ

ADAM SOLOMON

Z

B

NICK SOWKA

County Materials Corporation





# CMHA MEMBERSHIP

CMHA's strength is its members.  $\beta$



Z »  
p Rp »  $\beta$  ~ ep § ~ §p p R »p Rp

	→	<b>967</b>
TOTAL MEMBERS		COMPANIES
Z ~ $\beta$ p p p pe Z $\beta$ pp		<b>142</b>
$\beta$ e $\beta$ $\beta$ ~ ~ $\beta$ $\beta$		<b>267</b>
p ~ $\beta$ pe Z $\beta$ pp		<b>553</b>
~ Z $\beta$ pp		<b>29</b>

	→	<b>264</b>
$\beta$ § p Rp		COMPANIES
e Zp p Rp		<b>127</b>
~ Z $\beta$ p p Rp		<b>107</b>
Z ~ Z $\beta$ § p Rp		<b>23</b>
ep ~ p $\beta$ § p Rp		<b>3</b>
$\beta$ p $\beta$ ~ $\beta$ § p Rp		<b>1</b>

pZ § B B § p Zp p Zp

Z » ~

### CMHA HALL OF FAME

Z » ~ » £

generations to come.

#### 2025 INDUCTEES:



STEVE BERRY



RICK MUTH



CHARLES MCGRATH,  
FASAE, CAE



DR. ED FIORONI

p p § B § £p B ~ ~ ~ e

#### 2025 RECIPIENTS: STARLING JOHNSON & ZACH BOYD

Z » ~ R  
~ Z Z Z  
p



Z » ~ B ~ ~ e

Z ~  
Z » ~ Z R B

Z » ~

#### 2025 RECIPIENTS:



MAJOR OGILVIE  
Zp p

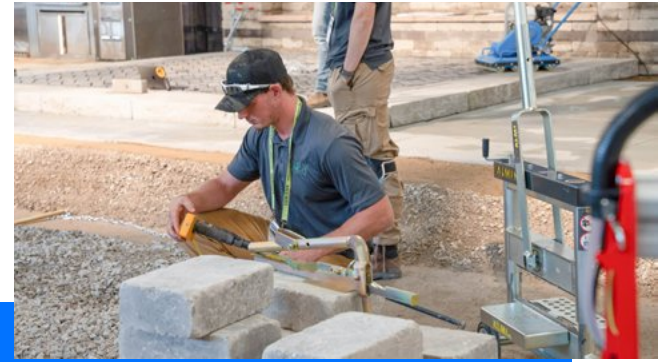


BLAIR HARTER



HEIDI JANDRIS  
~ e B R Z

# IN 2025



## MANUFACTURED STONE VENEER

the Z Z »

β

## CONTRACTOR SUPPORT

β

Z βR Z e

β

Contractor

accessible.

Contractor Meet-ups

Contractor Survey

p

Contractor Directory

**TOP 3** HOME RETURN ON INVESTMENT PROJECTS

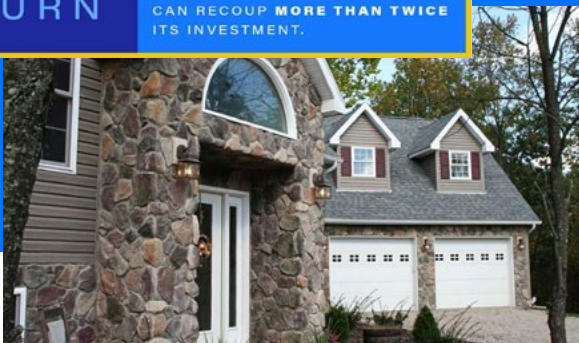
**206%**

RETURN

**2X**

MANUFACTURED STONE VENEER

CAN RECOUP MORE THAN TWICE ITS INVESTMENT.



e Z β § βp βp β »  
e β p pZp p

Z  
Z Z »





~ e Z ~ Z  
β β β β p

R β e β § Z ep ~ e Z ~ Z



pβ β £ Z β ~ pZ p  
Z

Z » ~

### NATIONAL LEADERSHIP

Z » ~

Z

Z

Z

~ ZB

β ~

Z » ~



pZ § B B § e Z~  
Z »~ ~ Z  
Z



e Z Z~ p§ p  
Z »~ Z  
Z p e R  
p e Z

Z Z p p ~ Z » pZ ff e ~ p

Z Z B

Z » ~ Z R R R



# CONCRETE MASONRY CHECKOFF

**\$17,722,428** in program investments to increase market share for concrete masonry



**Estimated reach of over 441M** from our mix of earned, sponsored and syndicated media coverage for Beauty of Block

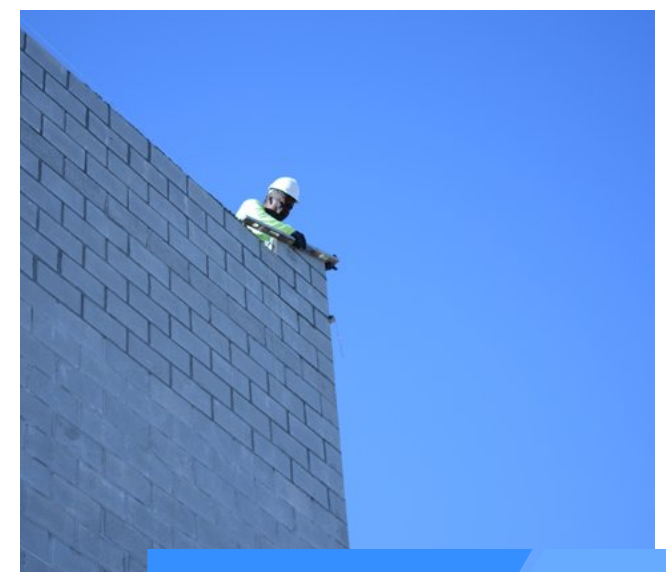
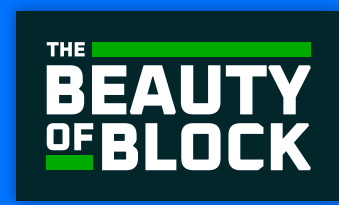


**180k+** concrete block specified into project plans with the Block Design Collective



AEC registered users active in the Block Learning Hub

In 2025, CMC partnered with CMHA to review and respond to **more than 1,800 code proposals**, defending industry priorities and helping secure four positive national code changes.



~ e Z ~ Z ß ~ Z ß



### DOT OUTREACH

Z » ~  
e

permeable interlocking concrete pavement  
⌘

£ Z Z Z » ~

Z  
⌘

Z » ~ ß § ß »  
~ § ß ⌘  
Z » ~

§ p p p ~ ß  
ß Z ~ e ~

Z » ~

Z

£ Z R Z

Z » ~

continues positioning the association as a



# RESEARCH

Z »

R pZ » » » »

Rp p p Z »

Z »

Z

R  
Z

S

» »

peSp p B p p Z »  
£ Ø B£

Z »

R Z » ~

§ β p ~ β ~ e β § p p̃ Z »  
 Z » ~

specification conversations.

p § ~ e p e R ~ p  
 Z » ~

**CMHA LAB INTERNS**  
 Z » ~

through our association.

**CARBON RESEARCH**  
 Z » ~

th Z

R ~ Z £ β  
 Z » ~

through technical evaluation of backfill materials

**UPDATED DETAILS ON PAVERS**  
 Z » ~

best practices.



pe Z ~ ß  
DEVELOPMENT

£ Z p

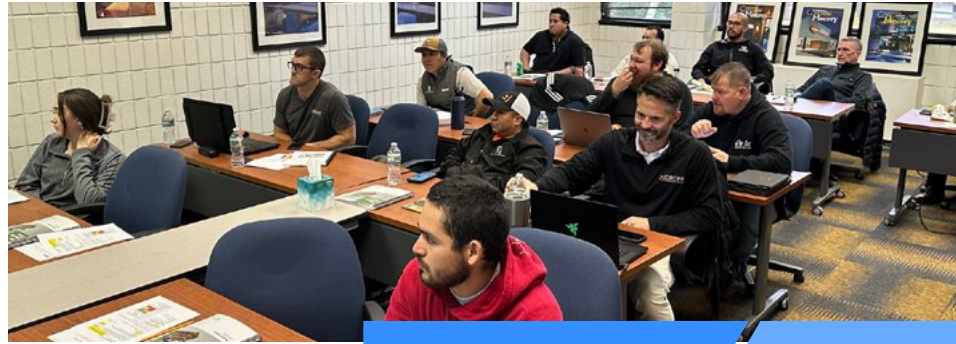


pe Z ~ ß Z p ß ß ~ ß

p Z » ~ ß Z » ~  
Z » ~  
Z » ~ p

Z ~ R pe Z ~ ß  
p ~ pZ e ~ ß § ~  
Z » ~ ~ pZ  
e p ~ Z e ß Z  
systems to other competing systems.

**1,488** TOTAL ATTENDEES 2024  
**1,727** TOTAL ATTENDEES 2025



## INSTALLER EDUCATION & CERTIFICATION

Z »~

Z

B

Z B

CPI COURSES IN 2025

46

883

45

sponsoring companies

## CERTIFICATION AT CMHA

Z »~ Z

R

Z »~

p

Z »~

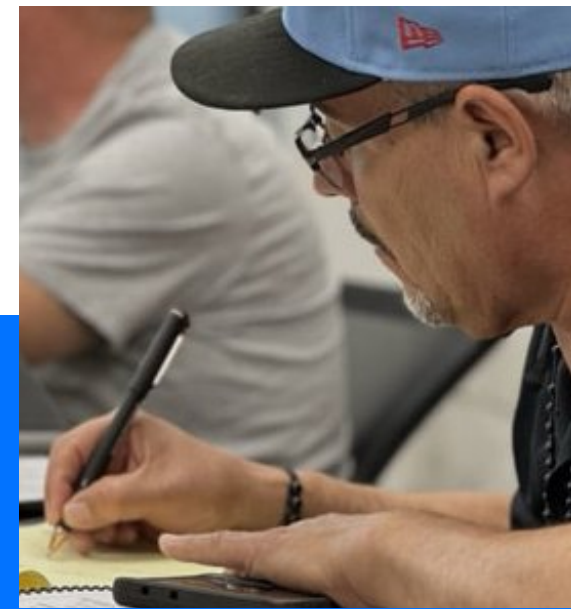
competitive marketplace.

B

Z »~ Z

Interlocking Concrete Pavement

Permeable Interlocking Concrete Pavement



p ~ eß § pe Z~ B  
**OPPORTUNITIES**

B

Z »~

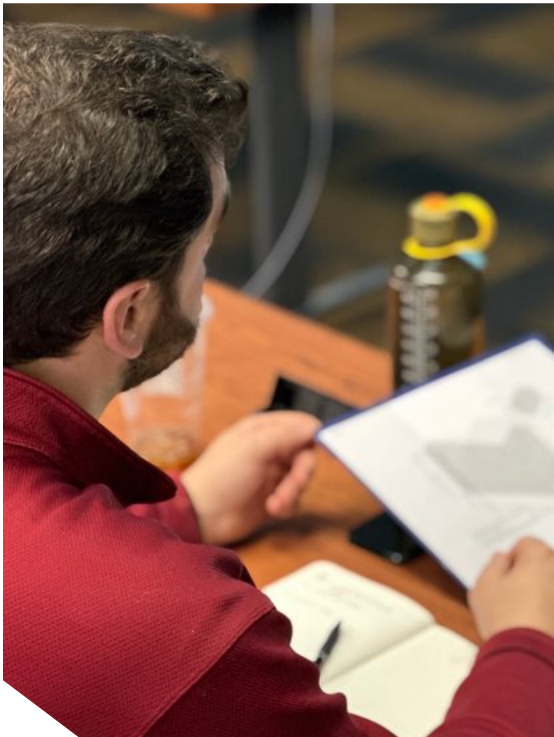
Z »~

p

p

Z

Z »~ p



f Zp ep p S~ Sp p

R

Z »~ B Z »~



R Z p Z Ep p Zp  
B Z »~ R Z

promoting concrete masonry.

~ B ~ Z pS B p  
**LANDSCAPE**  
Z p B B Z Z  
Z »~

talent through involvement

Z  
Z Z Z

Z »~

B ~  
Z »~

competition.



# EDUCATION PRIORITIES IN 2026

B Z » ~

e Z » ~ p

## COMPETITION

Z ~ £ Z » ~ Z ~

R helping secure concrete masonry remains a material Z » ~

E Z B p B ~ p Z p



Concrete Paver Installer Course

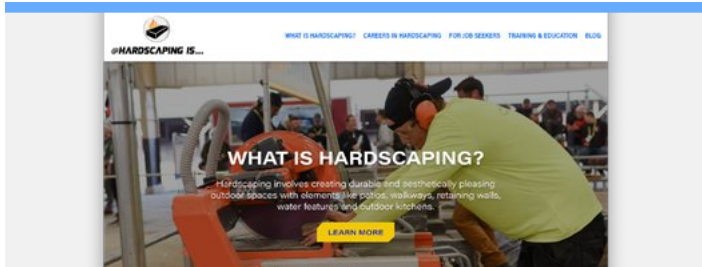


Manufactured Stone Veneer Installer Course



Segmental Retaining Wall Installer Course

§



» ~ e Z ~ B § B Z

Z » ~ » B

B Z » ~



p p  
p § ~ § p p



pp B § pZ ~  
B B



» £  
Z » ~





Be part of the process

£

»

member involvement in shaping outcomes throughout the year.

» £

## CANADIAN HARDSCAPE ACTIVITIES

»

»

»





# HARDSCAPE North America

## DEVELOPMENT

» Z β £ Zp

β Z

p

resilient communities.

p Zp p Zp eβ

£

» β Z

p

»

### HNA BY THE NUMBERS

Nearly 30,000 total attendees

» p p

3,699 HNA-only participants  
— a 10% increase

Attendees from 50 states and 52  
countries » p p

across indoor and outdoor spaces

» p p

226 HNA exhibitors

75,900 square feet of HNA exhibit

β

42,000 square feet

Hardscape House

30-acre e

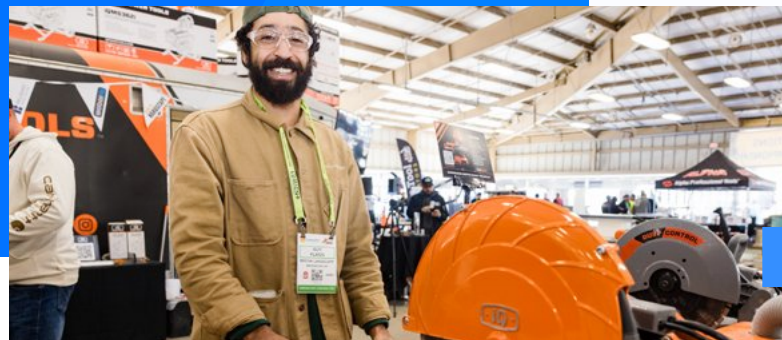
p p

64 participants in Pre-Show  
CMHA Installer Courses

348 attendees in hands-on  
hardscape demos

12 teams competed in the  
HNA Installer Championship

in prizes awarded





CHAIR  
NCMA FOUNDATION

R Z B

Z ~ £

£

~ pZ e

£

£

Z ~ £



## PROJECTS FUNDED IN 2025

**\$552,851**

TOTAL FUNDED



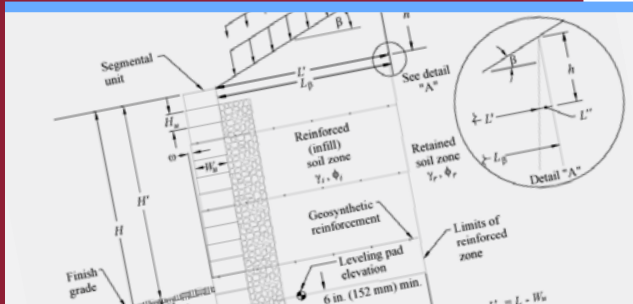
### COMPLETED PROJECTS

- Industry Average EPD Development
- Virtual Reality for Architectural and Structural Collaboration in CMU
- Standardization of Dry-Stack Concrete Masonry Design and Construction Provisions
- BGSU Architecture Student Design Competition
- NCMA Education for Architects on AEC Daily
- CMHA Internships
- University Curriculum for Teaching Basic SRW Design
- Assessment of CO2 Sequestration in Manufactured Concrete Products: Phase II
- Southwest Guide to Masonry
- PSU Architecture Student Design Competition
- 15th Canadian Masonry Symposium Sponsorship
- WSU Tactile Learning Exhibit

### SCHOLARSHIPS

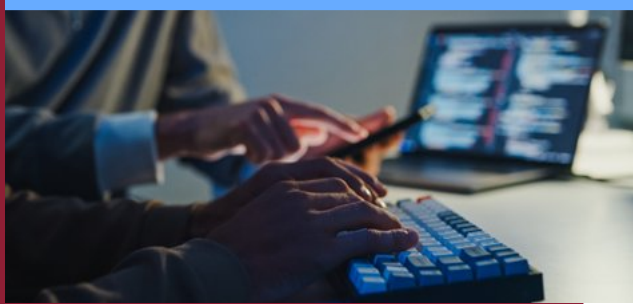
- John & Marlene Heslip Scholarship Recipients
  - Nicholas McDonald
  - Anna Turco  
Clemson University
- Paul and Helen Lenchuck Scholarship Recipients
  - Aakash Basu  
Clemson University
  - Parajuli Samvid  
University of Houston
- SRW Graduate Researcher Scholarship Recipient
  - Rupsa Roy

pZ » § § » § § »



~ e ~ Z B § § § R p ~ B ep §  
 » § » £ Z ~ p p B §

ß e £



ß ~ p ~ B £ ~ Z » B pZ ~  
**AND STRUCTURAL COLLABORATION**

R

cohesive masonry projects.



~ e p R R § p Z p B B  
 £

p





**TRAVIS HILLDORE**  
CHAIR  
ICPI FOUNDATION

» B

Ø BE

p

B

£

£

B

£

Ø BE

»

# PROJECTS FUNDED IN 2025

**\$268,231**

TOTAL FUNDED

## PROJECTS COMPLETED IN 2025

Open-graded aggregate compaction

pe Z

§ B § pZ

Tools for Schools

CO<sub>2</sub> Sequestration in Pavers Z » ~

pe Z

Edge Restraint Research Z » ~

Wireless EV Charging ~ B p

Hardscaping1s

ASCE Permeable Pavement Manual 2nd Edition

PICP Loading and Geometry – Z

AI Chatbot p ~



pZ » B » B »



pZ » ~ B B p B B ~ p ep B

B Z B Z B



pe § p p ~ B p B §

Z » ~



B p p p Z » ~ § B §

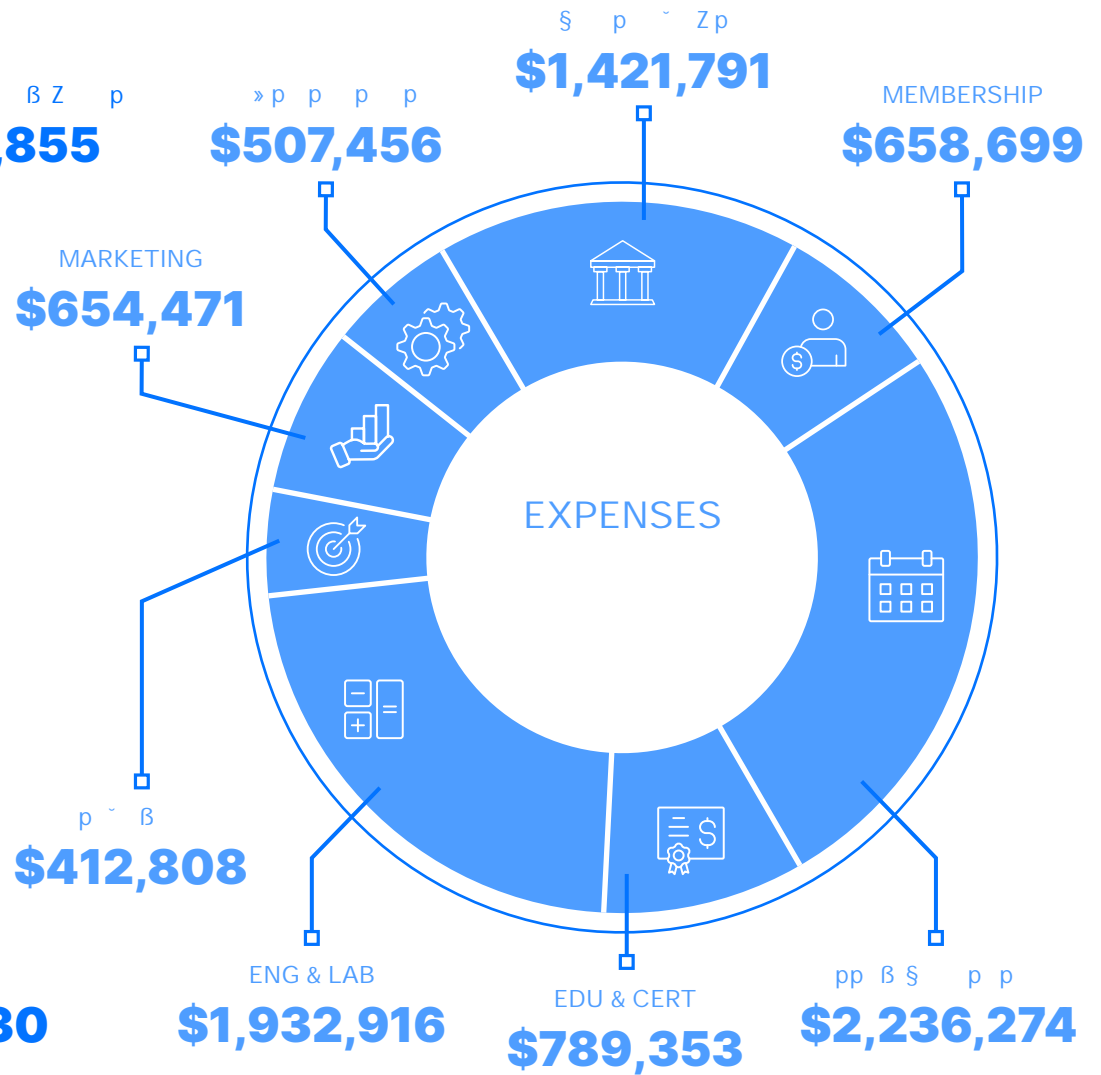
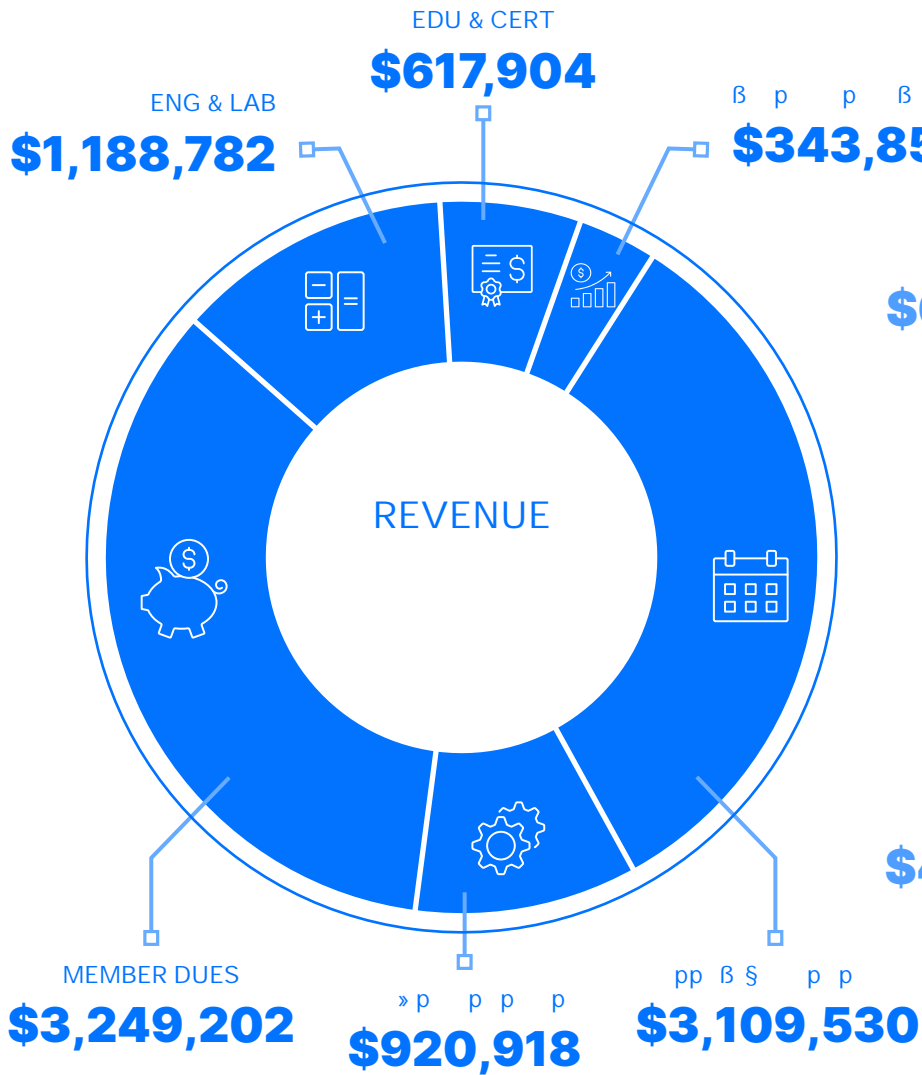
~ § Z » ~ p



Z p p ~ B



Z » £B ZB p p e p  
 p p



# CMHA FOUNDATIONS

Z »



~ p e ££ epZp Rp

p £  
Z £  
~ p ~ p  
~ B R B B p p ~ p  
§ ~

~ p e ££ p

p £  
Z £  
~ p ~ p  
~ B R B B p p ~ p  
§ ~





# β § AHEAD

---



Z » ~

β Z » ~

β

Together, we'll continue raising the bar and building the future of masonry and hardscapes.

Z  
Z » ~ R Z





# ASSOCIATES

RZ Z  
 ~ Z Z B  
 ~ R Z  
 ~ Z  
 ~ e B  
 Afinitas  
 ~  
 Alabama Pallets  
 ~ R Z  
 ~  
 ~ e  
 ~  
 ~ ep  
 Argos USA  
 ~ B  
 ~ pZ B  
 R Z  
 CarbiCrete  
 Z R  
 Ze Z  
 Zp p ~ B  
 £ ~ B  
 Z  
 Z »  
 Z e  
 Z p  
 Z B  
 Z B  
 e Z  
 e B  
 p  
 p \$  
 £ B ~ \$ » Z \$  
 \$  
 \$  
 » ~ B  
 »

Ø B Z Z  
 B B Z  
 Innospec Active Chemicals  
 B R p Z  
 ~  
 Z  
 B Z  
 R»  
 R  
 R ~ Z  
 Kraft Curing Systems  
 B B  
 ~  
 ~ p Z  
 ~ Ø p p B B  
 B Z Z B  
 B Z B  
 ~ pBZ  
 ~ Z  
 R B  
 B B  
 p ~ B  
 p ~ B  
 R ~ p R Z  
 Permaloc Corporation  
 Z  
 ~  
 B  
 Z B  
 ~ e ~ B  
 ~ B

~  
 B  
 Sika Corporation  
 B p ~  
 ~ Z B  
 B  
 \$  
 Z B  
 Z B ~ Z ~ Z  
 ~  
 ~ BR p  
 R B  
 Strata Systems  
 £ ~  
 Z  
 p ~ ~ B  
 £ Z Z  
 p Z Z  
 \$ Z  
 p  
 p  
 B Z ~ p  
 ~  
 p ~  
 ~ ZZ R  
 ~ ~ \$  
 B B  
 eR  
 B  
 Westblock Systems Inc  
 R  
 ~  
 B  
 \$ »

Z ~ Z B S p Rp Z ~ B

~  
RZ B  
R Z  
Z » Z  
e B  
e B  
e  
p  
p B

Farley Interlocking Paving  
£ ~ Z B  
S e B  
S Z Z  
» p B  
Z  
B  
£ Z

B  
B  
Z B  
S Z  
Z Z  
B

ep ~ p B S p Rp Z ~ B

Instone

Ep B ~ B S p Rp Z ~ B

Z p

A complete up-to-date listing of CMHA member companies and individual member is available online.



